



COMMITTED TO EXCELLENCE & PRECISION

- EV Battery & Charger Components
- Wire Seals, Connector Seals & Mat Seals
- Engineering Components

About US



Since 2014, we've grown from an elastomeric component manufacturer into a full-fledged engineering company serving automotive, electrical, and EV industries. With in-house R&D, engineering, and product design, we deliver end-to-end solutions while exceeding industry standards. Our commitment to quality, innovation, and agility is reinforced by quick prototyping, ECN support, and collaborations with leading labs and institutes like IRMRA, keeping us at the forefront of elastomeric technology and engineering excellence.



OUR MISSION

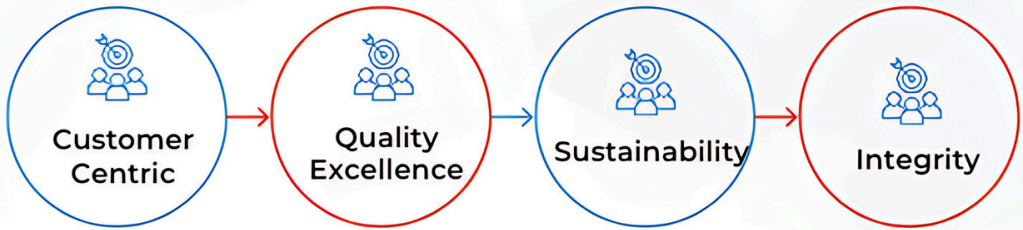
To be a globally acclaimed, reliable, and innovative manufacturing partner for auto OEMs, leading in design, craftsmanship, and emerging innovations.



OUR VISION

Become the preferred partner for 2WEV OEMs & Auto Industry by delivering quick prototypes, ensuring FTQ, seizing new tech opportunities, and fostering a world-class workplace.

Core Values



QUALITY POLICY

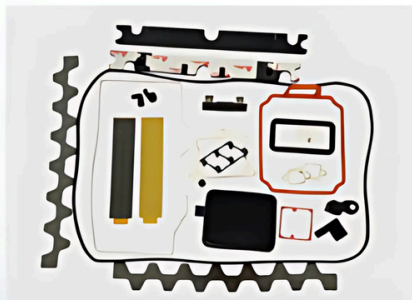
We are committed to produce and supply high quality products, understand and fulfill the needs and expectations of interested parties and continually improve the quality management system.

Certificates & Awards



EV Battery & Charger Components

- High-quality seals and gaskets made from silicone and EPDM, ensuring durability and resistance to temperature, chemicals, and environmental factors.
- IP67 protection prevents moisture, dust, and contaminants from entering EV battery enclosures, cooling systems, and electrical connectors.
- Enhances energy efficiency, vehicle safety, and protection against thermal runaway
Product range includes metal to rubber bonded components,
- TPE/TPU parts with adhesive tape, and indigenous compounds for
battery packs, power electronics, and charging ports
- Flame retardant silicone rubber components provide thermal resistance and fire prevention in EV battery
- IP67 compliant seals and gaskets protect EV batteries and chargers from dust and water ingress
- Rubber, TPU, and TPE components with adhesive tapes ensure secure and reliable applications cell packs
- Over moulded metal components and busbars improve electrical connectivity and mechanical robustness
- Thermal conductive and electrically insulative pads manage heat and prevent electrical shorts in EV systems



EV Battery & Charger Components



TPU Damper with Adhesive



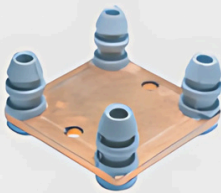
Cushion Pad with Adhesive



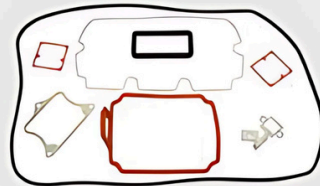
EV Battery Busbar



Push Fit Damper



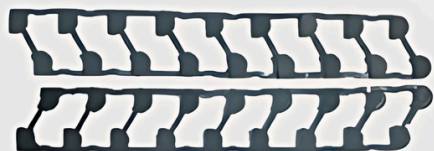
Mosfet Assembly



Seal & Gasket



Mosfet Plate Assembly



Damper Cell

Wire Seals, Connector Seals, Matt Seal

- Superior protection for electrical connections using durable silicone and NBR compounds
- Resistant to temperature extremes, UV radiation, and chemicals
- Secure fit blocking moisture, dust, and contaminants
- Available in various sizes, validated to SAE USCAR 2 Standards
- Ideal for waterproof connectors and critical applications
- Compatible with automatic crimping machines like KOMAX, KODERA, and JAM
- Self-lubricating properties for easy processing and increased productivity.
- RoHS, REACH, and ELV compliant for environmental safety
- Precision tool design ensures flash-free, high-quality components.
- Comprehensive product range including dummy, gum, peripheral, and mat seals
-



Other Engineering Components

- We offer a diverse range of customized elastomer products designed to meet the specific needs of customers including silicone & EPDM
- TPE - Parts with the combine benefits of rubber and plastic, providing versatility and recyclability for consumer goods and automotive parts.
- We specialize in manufacturing a wide variety of elastomer components tailored to the specific needs of our customers
- Our elastomer products are produced using a variety of advanced injection moulding manufacturing techniques as Compression, Transfer, Extrusion,
- With a commitment to innovation and quality, our team ensures that each customized elastomer solution enhances the performance and reliability of your products.

Types of Components

We specialize in manufacturing a wide variety of elastomer components tailored to the specific needs of our customers:

- Grommets
- Boots
- Bellow
- Tubes
- Dampers
- C type USB Charger
- Metal to rubber bonded Components
- Sealants
- O- Rings
- Washers
- Handle grips

An exploded view diagram of a mechanical device, likely a handheld vacuum or blower. The components are arranged in a circular pattern around a central motor housing. The parts include a large black motor housing at the bottom, a long flexible black hose on the left, a black handle with a trigger gun on the right, and various internal components like gears, bearings, and switches. The diagram is set against a light gray background with a faint grid.



We specialize in creating custom elastomer compounds tailored for your in-house applications. Engineered for durability, flexibility, and resistance to wear, heat, and chemicals, our high-performance materials undergo rigorous testing to meet industry standards. Designed for reliability in demanding conditions, these compounds offer sustainable, exclusive solutions for internal use.

Compound Development & Validations

Flame -retardant Elastomers for 2W EV Battery Safety

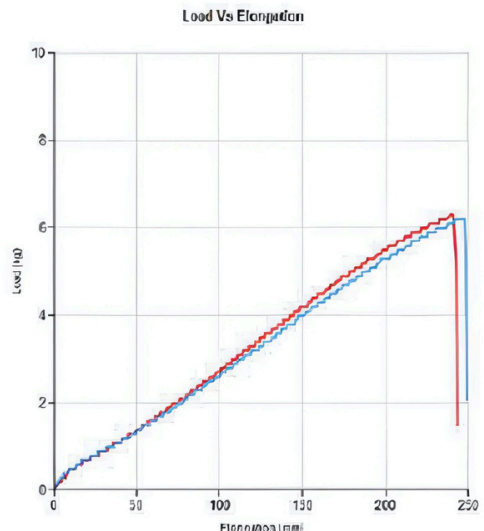
- To address the challenge of thermal runaways in 2W EVs, we introduced the VIBSIL™ series—indigenous, cost-effective silicone compounds with V0 flame-retardant ratings.
- Available in V0 60 and V0 40 Shore A, they combine ease of moulding with superior mechanical strength and electrical insulation.
- Accepted widely by battery manufacturers and EV OEMs, VIBSIL™ enhances safety, performance, and affordability, offering a reliable alternative to imported materials while ensuring durability and thermal risk mitigation.

General Characteristics	Test Standard	Unit	VIBSIL V0 40	VIBSIL V0 60
Appearance	—	—	Grey	Grey
Hardness	DIN 53 505	Sh A	40 ±5	60±5
Tensile Strength	ASTM D 412	N/mm ²	≥5	≥5
% Elongation	ASTM D 412	%	>300	>300
Tear Strength (N/mm) Die B	ASTM D624	N/mm	>18	>15
Density	ASTM D297	g/cm ³	1.45±0.03	1.45±0.03
Compression Set (175°C / 24 Hours	ASTM D 395	%	<25	<25
Dielectric Strength	ASTM D 149	Kv/mm	>17	>17
Volume resistivity	ASTM D 257	Ω.cm	3.37X 10 ¹⁴	2.3X10 ⁸
Surface Resistivity	ASTM D 257	MΩ	3.76 X 10 ¹⁴	2.5X10 ⁵
Dielectric Constant (-)	ASTM D 150		2.88	2.76
Limiting Oxygen Index (LOI)	ISO 4589-2	%	>35	>35
Comparative tracking index	ASTM D 3638		Group II	Group II
Flammability vertical burning @ Sample thickness: 2mm	UL 94	-	V0	V0

These innovative compounds are indispensable for ensuring reliable and cost-effective thermal risk mitigation in electric vehicles.

Test Date	Test Name	Specimen	Shape	LOT. No.	Sample No.	PRODUCT	
22-11-2024	Tensile	Vibsil 60 V0	Rectangle	FR071240210	01	Vibsil 60 V0	

Test No	183	182	Avg			
Width	6 mm	6 mm	6			
Thickness	2 mm	2 mm	2			
Length	50 mm	50 mm	50			
Area	12 mm ²	12 mm ²	12			
Test Speed	500 mm/min	500 mm/min	500			
Peak Load	6.3 kg	6.2 kg	6.25			
Elong. at Peak	239.16 mm	241.66 mm	240.41			
Tensile Strength	5.15 MPa	5.07 MPa	5.11			
% Elongation	455	466.66	460.93			
Modulus At 200%	2.21	2.12	2.165			
Modulus At 300%	3.43	3.27	3.35			



VIBMILEX™- EPDM 60

- Introducing VIBMILEX™ - EPDM 60, a cutting-edge compound designed for high performance. It boasts exceptional abrasion resistance, easy dispersion, heat and water resistance, and self-lubricating qualities, making it ideal for diverse applications.
- With superior durability in high-stress environments, it reduces maintenance costs while extending component lifespan. VIBMILEX™ combines functionality with a premium finish, ensuring reliable, efficient, and aesthetically pleasing solutions for industrial, automotive, and auto-electrical components.

This grade is suitable to use for, compression moulding and transfer moulding on addition of suitable peroxides.

Specification

General Characteristics	Test Standard	Value	Unit
Appearance	—		
Hardness	DIN 53 505	Sh A	Sh A
Tensile Strength	ASTM D 412	N/mm ²	N/mm ²
% Elongation at Break	ASTM D 412	%	%
Abrasion resistance	ISO 4649:2017	N/mm	mm ³
Density	ASTM D297	g/cm ³	g/cm ³
Compression Set (100°C / 70 Hours)	ASTM D 395	%	%
Volume Resistivity	ASTM D 257	Kv/mm	Ω.cm
Insulation Resistance	IS-10810	Ω.cm	mΩ

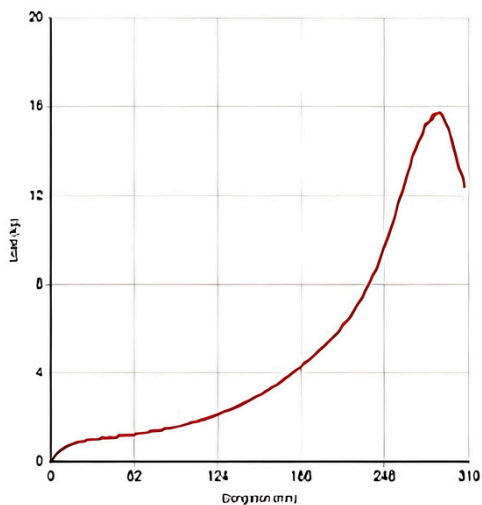
*Test specimens were cure at 165oC for 15 mins

VIBMILEX™- EPDM 60

Test Date	Test Name	Specimen	Shape	LOT. No.	Sample No.	PRODUCT	GROUP
	Tensile	EPDM 60	Rectangle		01	Rubber Cap	EPDM 60

Test No	155	Avg					
Width	6 mm	6					
Thickness	2 mm	2					
Length	50 mm	50					
Area	12 mm ²	12					
Test Speed	500 mm/min	500					
Peak Load	15.7 kg	15.7					
Elong. at Peak	294.10 mm	294.10					
Tensile Strength	12.03 MPa	12.03					
% Elongation	011.00	011.00					
Modulus At 100%	0.00	0.00					
Modulus At 200%	1.30	1.30					
Modulus At 300%	2.37	2.37					

Load Vs Elongation





Tool Design & Development -

We deliver precise rubber & plastic molding solutions through advanced design tools, innovative R&D, strategic partnerships, robust quality assurance, and cost-effective, efficient production using DFM principles.



Quality & Precision -

Our advanced facilities ensure reliable, industry-leading products for EV and LSR applications. With zero flash, minimal burr, and stringent quality standards, we deliver precision and excellence



Compound Development -

Local material sourcing while reducing environmental impact and import dependence. Advanced R&D ensures high-performing products,

empowering communities through partnerships and training



Infrastructure & Capabilities -

Our 100,000 sq. ft. facility across 3 plants is equipped with 20 hydraulic molding machines (40, 250 tons and 12" x 12" to 18" x 18" platens), advanced systems for chemical batching, rubber kneading, mixing, efficiency

post-curing, and a cutting-edge quality lab to ensure precision and



Customization & Collaboration -

We deliver tailored solutions by understanding customer needs, collaborating closely, and refining strategies for optimal results.

Customer Base



Gotion



Amphenol

Membership



Automotive Component Manufacturers Association of India



Maharatta Chamber of Commerce,
Industries and Agriculture



Contact Information



+91 206 828 0724



+91 777 001 2885



info@vibescomponents.com



Factory Address : Gate No. 1559/1560, Dehu - Alandi Rd, Shelarvasti, Chikhali, Pune, Maharashtra 411062



Corporate Office : AWFIS, Elpro Mall, 4th Floor Near Chaphekar Chowk Flyover, Chinchwad, Pune. 411033